

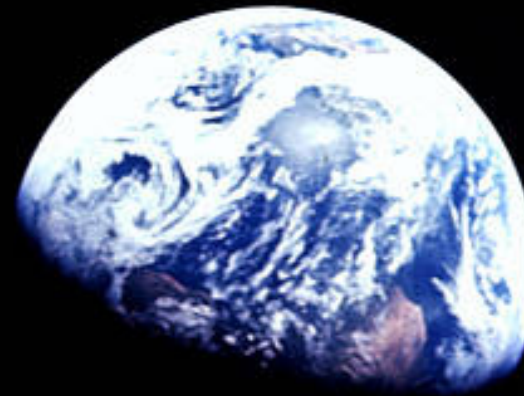
A group of people, including men and women, are shown playing traditional drums. The scene is dimly lit with a strong blue color cast. In the foreground, a large, light-colored drum is prominent. To its left, a man in a suit and bow tie is playing a smaller drum. Further back, other individuals are also playing drums. The background is dark, and a network of white lines and dots is overlaid on the right side of the image. The text 'AN EarthRISE50 INVITATION' is positioned in the lower-left corner.

AN
EarthRISE50
INVITATION

“[Earthrise] embodies three key pillars: interdependence, long-term thinking and profound collaboration. All are wrapped in a blanket of empathy and compassion. We cannot continue as a species with a two-dimensional map as our model. Humanity is at a critical point in history.”

RON GARAN

ASTRONAUT, SPEAKER, ENTREPRENEUR



Taken by astronaut Bill Anders in 1968, this iconic photograph of Earthrise changed the world.

“ We at Rising Tide Capital, along with our global partners, are seeing unprecedented shifts in our economy that require profound collaboration and action on a local and global level.

We believe the 50th anniversary of Earthrise offers us an opportunity to invite leaders at every level to activate their full potential to build inclusive economies that prioritize human and planetary well-being. ”

ALFA DEMMELLASH

CEO & CO-FOUNDER, RISING TIDE CAPITAL
CO-FOUNDER, FUTURE TIDE PARTNERS

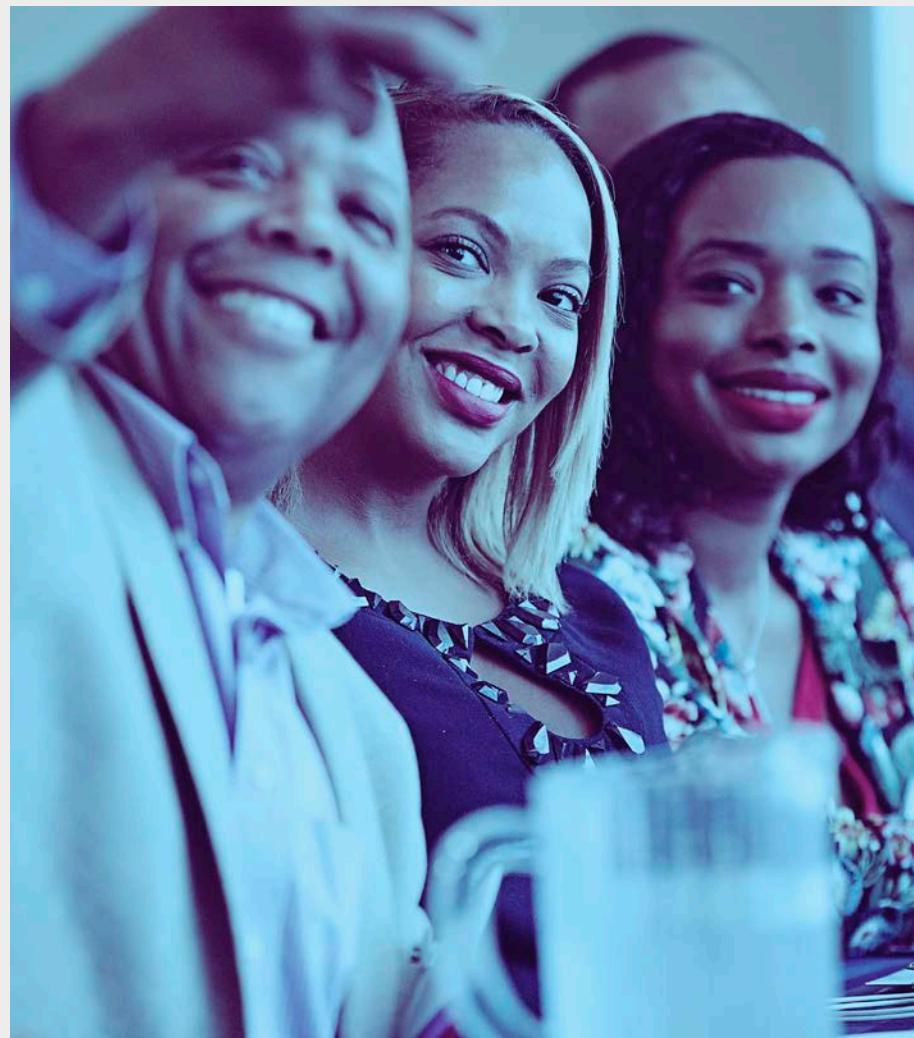


EarthRISE50

A GLOBAL MOVEMENT FOR INCLUSIVE ECONOMIES

imagine

*50 million people from across
the globe celebrating our planet
and our shared humanity*



- ▲ Hosting Earthrise Dinners
- ▲ Amplifying on their Platforms
- ▲ Living the Earthrise Principles
- ▲ Modeling inclusive leadership

Countdown to EarthRISE50

24 DECEMBER 2018



EXPONENTIAL HUMAN POTENTIAL
Conscious Company
Media + Decoded +
Future Tide Partners

13
NOVEMBER
NEW YORK

DO SOMETHING WEDNESDAY
Amplify
#EarthRISE50

28
NOVEMBER
EVERYWHERE

EARTHRISE50
Pre-launch activities
to long-term impact

24
DECEMBER
EVERYWHERE

08
NOVEMBER
NEW JERSEY

RISE KICKOFF
EarthRISE50
Founding Circle
Announced

14
NOVEMBER
CALIFORNIA

SHIFT CAPITAL DELEGATION
BALLE Summit on
Restorative Investing

21
DECEMBER
EVERYWHERE

CULTURAL AND SPIRITUAL GLOBAL ENGAGEMENT
EarthRISE50 Dinners

RISE: Our Destination Event

08 NOVEMBER 2018 | JERSEY CITY

At RISE 2018, join our visionary partners and global philanthropists--including special guest Joy Mangano, inventor, entrepreneur, and UN Champion for Innovation--as we celebrate the spirit of entrepreneurship grounded in the EarthRISE 50 principles of interdependence, long term thinking, and deep collaboration.

The EarthRISE50 GLOBAL FOUNDERS CIRCLE will be announced.



2017 HIGHLIGHTS

120M+

MEDIA IMPRESSIONS FROM LOCAL AND GLOBAL OUTLETS

150+

FUNDERS AND DONORS WITH SPECIAL PERFORMANCE BY PETER BUFFET

500+

ENTREPRENEURS, COMMUNITY PARTNERS AND PUBLIC LEADERS

EarthRISE50 Founding Circle

MEMBERSHIP DETAILS

As part of the EarthRISE50 Founding Circle, global influencers and champions of human potential will join us on a transformational journey from “hero to host” of a new future economy. In partnership with a small group of committed Restorative Investors, they will pool social, knowledge and financial resources to model an inclusive future economy from the ground up in the places they care most about, as well as those that need swift attention.

EarthRISE50 Founding Circle members will join learning journeys across the US and the world, participate in EarthRISE50 conversations at partner-led events in their locality, gain new skills as Restorative Investors and apply their learning, new networks and financial capital to emergent solutions that hold promise in advancing the EarthRISE50 goals of awakening to our interdependence, profound collaboration, and long-term thinking.

Timeline

SHORT-TERM EARTHRISE50 ACTIVITIES

- ▲ EarthRISE50 Steering Committee planning meeting in New Jersey | **September 20**
- ▲ Attend Jubilee Gathering with Restorative Investors in Louisiana | **September 26**
- ▲ UNGA week opportunity to share EarthRISE50 plans with Constellation Team in New York | **September 21**
- ▲ Post EarthRISE Dinner Toolkit on new EarthRISE50.org website | **October 09**
- ▲ Attend EarthRISE50 Founding Circle Announcement in Jersey City | **November 08**
- ▲ Call to action for Restorative Investors Commit to \$50K+/year for 5 years starting in 2019 | **November 28**
- ▲ Call to action to artists, faith based community leaders to influence the global culture | **December 21**
- ▲ **Spring:** Restorative Investors to gather at EarthRISE50 Founding Circle home in Louisiana
- ▲ **Summer:** Restorative Investors to gather for Summer Reflective in 2019



“Collectively, we have connected with hundreds of women by sharing our passions, and teaching our respective crafts. We decided to combine our talents and resources to not only promote collaboration itself, but also to offer a platform for other women business owners to showcase their talents.”

Kimberly Sumpter, La Shonda Tyree and Dawn Fitch are three women leaders out 2,100+ Rising Tide Entrepreneurs who are investing their time and talents to create community resilience and innovation for human and planetary well-being in an inclusive future economy.



“My sense is that in the evolution of the planet, we are still becoming human, still striving to reach our full human potential. Through our deepening awareness and loving attention we can collectively shift consciousness to embrace compassionate interdependence with all life on earth.”

MARTIN PING
HAWTHORNE VALLEY
EXECUTIVE DIRECTOR

impact

By 2030, **50 EarthRISE50** founding circle members will have mobilized **250 local champions & restorative investors** who will support a network of partners serving **50,000 entrepreneurial leaders in the most disadvantaged communities** with the social, knowledge and access to financial capital they need to adjust to the emerging future economy.

TIMELINE



“ Earthrise gives humanity a moment to stand together, to see ourselves connected and in context. ”

DOUG FORRESTER

FOUNDING CHAIRMAN,
RISING TIDE CAPITAL





To learn more
about the
EarthRISE50
Founders Circle

Contact:

Amy Hartzler, Campaign Strategist
amy@RisingTideCapital.org

Rising Tide Capital Sponsors & Partners

SINCE 2004

JPMORGAN CHASE & CO.



THE ROBERT & MARION
SCHAMANN BROZOWSKI
FOUNDATION, INC.



NoVo Foundation
create. change.



Morgan Stanley



P I M C O



THE PAUL & PHYLLIS
FIREMAN
CHARITABLE
FOUNDATION



SILVERMAN
BUILDING NEIGHBORHOODS

Sheri Sobrato Fund
An advised fund of Silicon Valley Community Foundation

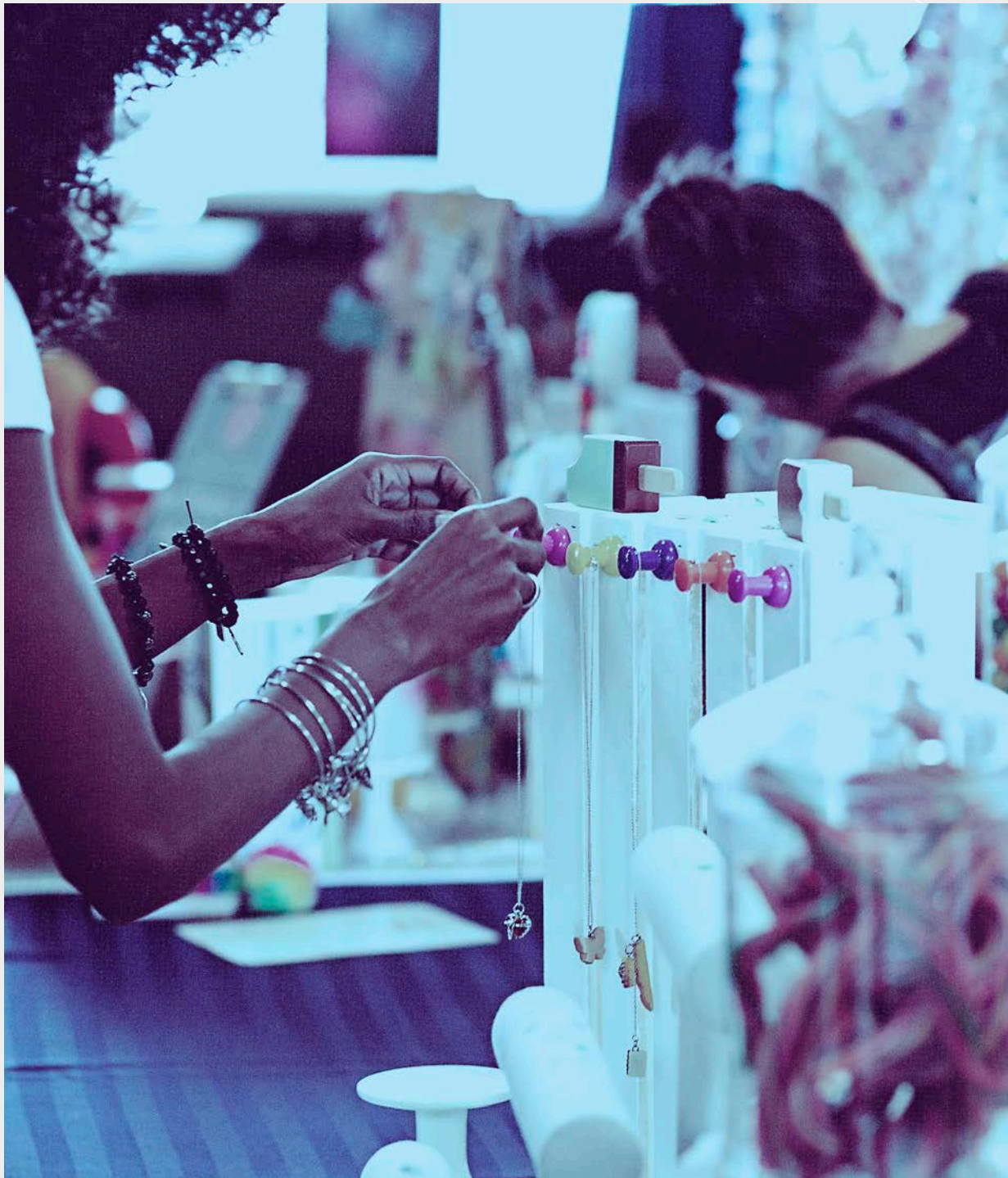


MCJ AMELIOR
FOUNDATION



MEDIA COVERAGE





RISING TIDE
CAPITAL

Founded in 2004, Rising Tide Capital is a non-profit organization transforming lives and communities through entrepreneurship.

www.risingtidecapital.org

EarthRISE50